

Blue Monk > Bb

(Medium Swing)

Thelonious Monk

4/4 || **B^b₇**

| **E^b₇**

| **B^b₇ F₇**

| **B^b B^b₇** |

| **E^b₇**

| **E_o**

| **B^b F₇**

| **B^b₇** |

| **F₇**

| **F₇**

| **B^b₇**

| **B^b₇** ||

Black And Blue – Gm

(Slow Swing)

Fats Waller

A

4/4

G-7 | E^b₇ | G-7 | C₇ E^b₋₇ |

B^b₆ / D G-7 | C-7 F₇ | B^b_{Δ7} | A_ø D_{7^b9} |

A

G-7 | E^b₇ | G-7 | C₇ E^b₋₇ |

B^b₆ / D G-7 | C-7 F₇ | B^b₆ E^b₇ | B^b₆ |

B

G^b₇ | G^b₇ | B^b₆ C-7 | D-7 B^b₆ |

G^b₇ | G^b₇ | B^b₆ E^b₇ | A_ø D_{7^b9} |

A

G-7 | E^b₇ | G-7 | C₇ E^b₋₇ |

B^b₆ / D G-7 | C-7 F₇ | B^b₆ E^b₇ | B^b₆ ||

A_ø7D₇

Servus kleine Lu ohne Intro

(Medium Swing)

A
4
4

F	F	C ₇	C ₇
C ₇	C ₇	F	F
A ₋₇	A ^b _o	G ₋₇	C ₇
G ₇	G ₇	G ₋₇	C ₇

B

F	F	C ₇	C ₇
C ₇	C ₇	A ₇	A ₇
B ^b	B _o	F _{/c}	D ₇
G ₇	C ₇	F	F

S: + letzte 8 Takte

That's My Home > F

(Medium Swing)

Rene, Rene, Ellison 1932

A

4/4

B^b

B^b₋

F

G₇

G₋₇

C₇

F

F₇

A

B^b

B^b₋

F

G₇

G₋₇

C₇

F

B^b₋

F

B

B^b₋

B^b₋₆

F

A₋₇ D₇

G₋₇

F[#]_o G₇

C₇

C₇ F₇

A

B^b

B^b₋

F

G₇

G₋₇

C₇

F

B^b₋

F

||

It's Only a Paper Moon (Sax) > Bb

(Medium Swing)

Harold Arlen

in
4
4

E_o | **E_o** | **E_o** | **E_o** |
C₋₇ | **F₇** | **B₆^b** | **B₆^b** |

A

B₆^b **B_o** | **C₋₇** **F₇** | **C₋₇** **F₇** | **B₆^b** **C₋₇F₇** |
B^b **B₇^b_{/D}** | **E₆^b** **E_o** | **C₋₇^b_{/F}** **F₇** | **B₆^b** **F₇** |

A

B₆^b **B_o** | **C₋₇** **F₇** | **C₋₇** **F₇** | **B₆^b** **C₋₇F₇** |
B^b **B₇^b_{/D}** | **E₆^b** **E_o** | **C₋₇^b_{/F}** **F₇** | **B₆^b** |

B

E^b **E_o** | **B₇^b_{/F}** **G₇** | **C₋₇** **F₇** | **B₆^b** **B₇^b** |
E^b **E_o** | **B₇^b_{/F}** | **D_{ø7}** **G₇** | **C₋₇** **F₇** |

A

B₆^b **B_o** | **C₋₇** **F₇** | **C₋₇** **F₇** | **B₆^b** **C₋₇F₇** |
B^b **B₇^b_{/D}** | **E₆^b** **E_o** | **C₋₇^b_{/F}** **F₇** | **B₆^b** **F₇** ||

S 2x verlängert wie Intro

Klarinette Jürg > Some Of These Days > D-/F

(Medium Swing)

Shelton Brooks (1910)

4 4	A ₇	A ₇	D ₋	D ₋
	A ₇	A ₇	D ₋	D ₋
	D ₇	D ₇	G ₇	G ₇
	G ₇	G ₇	C ₇	C ₇
	F ₇	F ₇	B ^b	B ^b
	A _ø	D ₇	G ₋	G ₋
	B ^b	B _ø	F _{/c}	D ₇
	G ₇	C ₇	F	F F

S: 2-mal 8 Takte

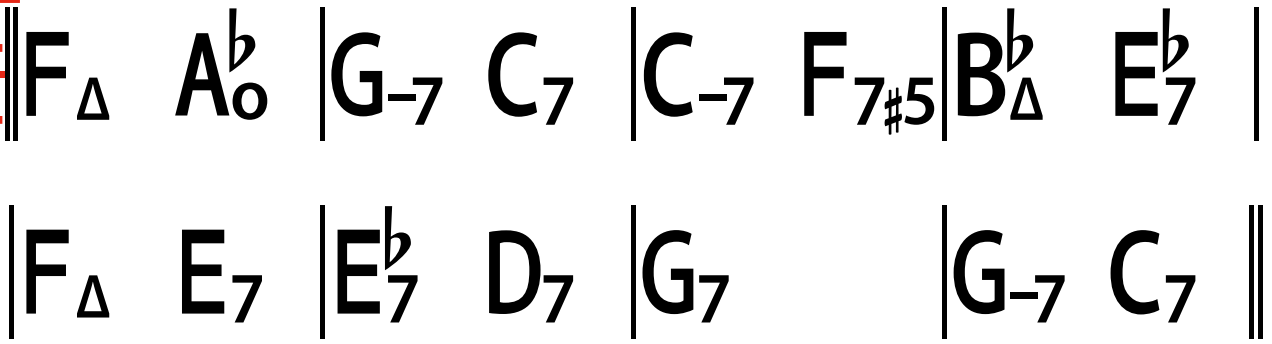
Garner > It's The Talk of the Town > F

(Ballad)

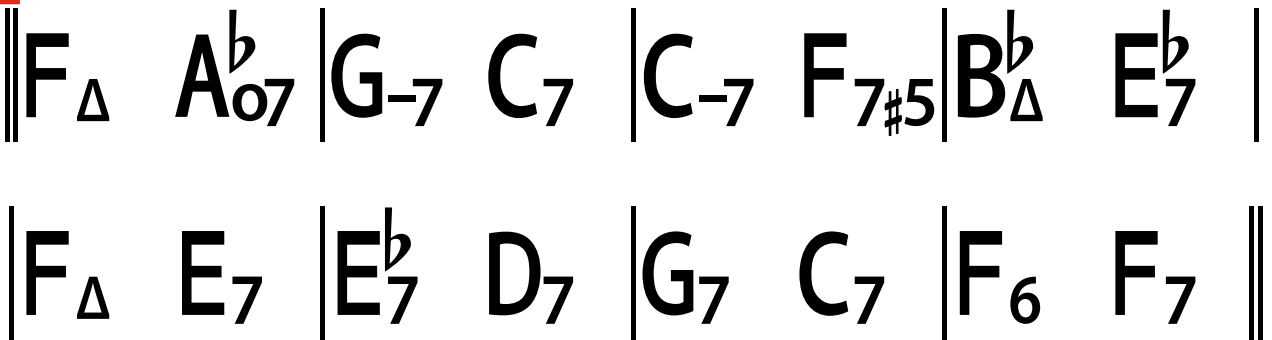
Jerry Livingston – Marty Symers, A.J. Neiburg, 1933

A

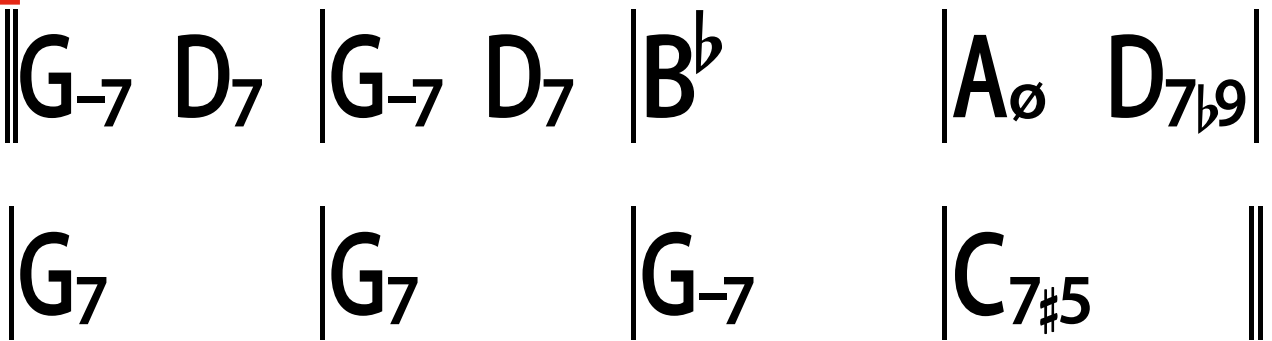
4
4



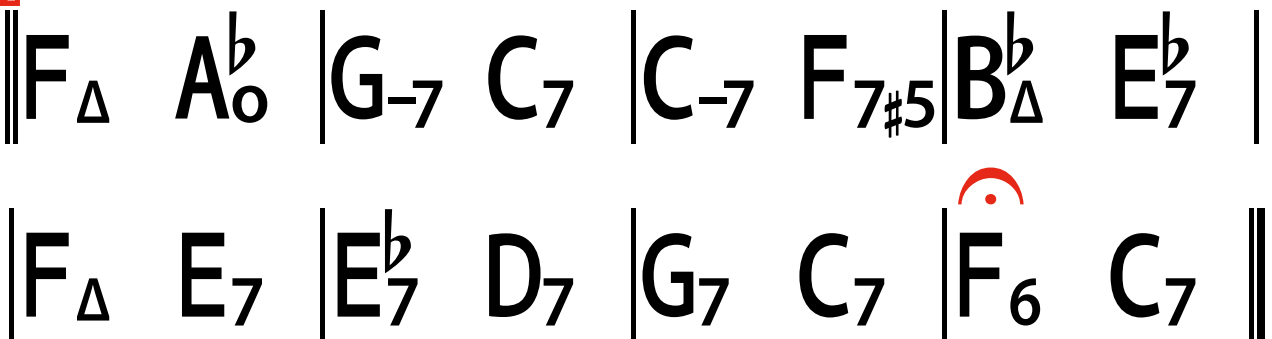
A



B



A



A Smooth One > Bb

(Medium Up Swing)

Benny Goodman

A

4/4

E_o E₆^b | B₆^b B₆^b | E_o E₆^b | B₆^b B₆^b |

| E_o E₆^b | B₆^b B₆^b | C₇ F₇ | B₆^b |

A

E_o E₆^b | B₆^b B₆^b | E_o E₆^b | B₆^b B₆^b |

| E_o E₆^b | B₆^b B₆^b | C₇ F₇ | B₆^b B₇^b |

B

E₆^b | E_o | B₆^b | F₋₇ B₇^b |

E₆^b | E_o | B₆^b G_{7b9} | C_ø F₇ |

A

E_o E₆^b | B₆^b B₆^b | E_o E₆^b | B₆^b B₆^b |

| E_o E₆^b | B₆^b B₆^b | C₇ F₇ | B₆^b ||

()

▪

—

$\frac{A}{4} \left(\frac{4}{4} \right) C$

Aint Misbehavin > Eb

(Medium Swing)

Fats Waller (1929)

In

4/4

E^b B₇ | E_Δ | E^b B₇ | E_Δ |

E^b D^b₇ | C₇ | F₋₇ B^b₇ | E^b |

E^b B₇ | E_Δ | E^b B₇ | E_Δ |

E^b D^b₇ | C₇ | F₋₇ | B^b₇ ||

A

E^b E_o | F₋₇ F[#]_o | E^b_{/G} E^b_{7#5} | A^b A^b₋₆ |

E^b_{/G} C₇ | F₋₇ B^b₇ | G₇ C₇ | F₇ B^b₇ ||

E^b E_o | F₋₇ F[#]_o | E^b_{/G} E^b_{7#5} | A^b A^b₋₆ |

E^b_{/G} C₇ | F₋₇ B^b₇ | E^b A^b₋₆ | E^b G₇ ||

B

C₋ | A^b₇ | F₇ | C₇ |

B^b_{/F} F_o | C₋₇ F₇ | G₋₇ C₇ | F₇ B^b₇ ||

A

E^b E_o | F₋₇ F[#]_o | E^b_{/G} E^b_{7#5} | A^b A^b₋₆ |

E^b_{/G} C₇ | F₋₇ B^b₇ | E^b₆ C₋₇ | F₋₇ B^b₇ ||

Stranger On The Shore > B-Dur

Bernard Stanley (Acker) Bilk, Robert Mellin 1961

(Ballad)

A

4/4

B^b | C₋₇ F₇ | B^b B₇^b | E^b E₋^b |

B^b G₋₇ | C₇ | C₋₇ | F₇ |

A

B^b | C₋₇ F₇ | B^b B₇^b | E^b E₋^b |

B^b G₋₇ | D₋ B₇^b | C₋₇ F₇ | B^b B₇^b |

B

E^b | B^b | C₋₇ F₇ | B^b B₇^b |

E^b | D₋ | C₇ | C₋₇ F₇ |

A

B^b | C₋₇ F₇ | B^b B₇^b | E^b E₋^b |

B^b G₋₇ | D₋ B₇^b | C₋₇ F₇ | B^b F₇ } :

A

|

A

C | D₋₇ G₇ | C C₇ | F F₋ |

C | E₋₇ C₇ | D₋₇ G₇ | C₇ B₇^b |

G₇^b

B^b

|

Sway >> D- Latin

Ruiz-Gimbel (1953)

(Latin)

A Intro: A-Teil Trio

4/4 | A₇ | A₇ | D- | D- |

| A₇ | A₇ | D- | D-N.C. ||

A | A₇ | A₇ | D- | D- |

| A₇ | A₇ | D- | D-N.C. ||

B | C₇ | C₇ | F | F |

| A₇ | A₇ | B₇^b | A₇ ||

A | A₇ | A₇ | D- | D- |

| A₇ | A₇ | D- | D-N.C. ||

A | A₇ | A₇ | D- | D- |

| A₇ | A₇ | D- | A₇ D- | G |

| D-₆ | D-₆ ||

S: 3-mal + Cha-cha-cha

Garner > Gone With The Wind > Eb

(Medium Swing)

Allie Wrubel – Herb Magidson, 1937

A

4/4

F₋₇ B₇^b | E_Δ^b E_o | F₋₇ B₇^b | E_Δ^b |

A₋₇ D₇ | G₆ G_o[#] | A₋₇ D₇ | G_Δ |

G₋ | G_{o7}^b | F₋₇ | B₇^b |

E_Δ^b D_{7#5} | D₇^b C_{7b9} | F₋₇ | B₇^b ||

B

F₋₇ B₇^b | E_Δ^b E_o | F₋₇ B₇^b | E_Δ^b |

A₋₇ D₇ | G₆ G_o[#] | A₋₇ D₇ | G_Δ |

F₋₇ | C₋₇ | F₋₇ B₇^b | G_ø C_{7b9} |

F₋₇ | B₇^b | E_Δ^b | G_ø C₇ ||

(Medium Swing)

Just Squeeze Me > Bb

Duke Ellington

in
4
4

E^b_{-6} | $E^b_{-6} F_7 B^b$ | E^b_{-6} | $E^b_{-6} F_7 B^b$ |
 E^b_{-6} | $E^b_{-6} F_7 B^b$ | B^b | B^b |
Bass

A

$B^b_{\Delta} C_{-7}$ | $B^b_{\text{D}} C_{-7}$ | $B^b_{\Delta} C_{-7}$ | $B^b_{\text{D}} B_o$ |
 C_{-7} | $F_{7sus} F_7$ | $B^b_{\Delta} G_7$ | $C_{-7} F_7$ ||

A

$B^b_{\Delta} C_{-7}$ | $B^b_{\text{D}} F_7$ | $B^b_{\Delta} C_{-7}$ | $B^b_{\text{D}} B_o$ |
 C_{-7} | $F_{7sus} F_7$ | B^b_{Δ} | B^b_{Δ} ||

B

B^b_{Δ} | B^b_{Δ} | $E^b_{\Delta 7}$ | $E^b_{\Delta 7}$ |
 C_7 | C_7 | C_{-7} | $F_{7sus} F_7$ ||

A

$B^b_{\Delta} C_{-7}$ | $B^b_{\text{D}} F_7$ | $B^b_{\Delta} C_{-7}$ | $B^b_{\text{D}} B_o$ |
 C_{-7} | $F_{7sus} F_7$ | $B^b_{\Delta} G_7$ | $C_{-7} F_7$ ||

Schluss: 3-mal 4 Takte

Klarinette Jürg > Promenade aux Champs-Élysées > Ab

(Medium Swing) Sidney Bechet

A

4 4	B^b_Δ	B^b_Δ	B^b₆	B^b₆	
	G₋₇	G₋₇	C₇	C₇	
	F₇	F₇	D₇ G₋	D₇ G₋	
	C₇	C₇	C[#]_ø F₇	C[#]_ø F₇	

A

B^b_Δ	B^b_Δ	B^b_Δ	B^b_Δ	
G₋	G₋	C₇	C₇	
E^b_Δ	E^b₋	B^b_Δ	G₇	
C₇	C₇	C_ø	C_ø	
C₇	F₇	B^b_Δ	B^b_Δ	



What A Wonderful World > F

Weiss-Thiele

(Ballad)

A
4
4

|| F A- | B^b A- | G₋₇ F | A₇ D- |
| D^b | G₋₇ C₇ | F F₊ | B^b_{Δ7} C₇ ||

A

|| F A- | B^b A- | G₋₇ F | A₇ D- |
| D^b | G₋₇ C₇ | F B^b | F ||

B

|| C₇ | F | C₇ | F |
| D- A- | D- A- | D- E^b_o | G₋₇ G^b_o G₋₇ C₇ ||

A

	F A-	B^b A-	G₋₇ F	A₇ D-
D^b	G₋₇ C₇	F A_{ø7}	D₇	
G₋₇	G₋₇ C_{7b9}	F B^b₆	F	

I Want A Little Girl > F

(Medium Swing)

Murray Mencher, Billy Moll (1930)

A

4/4

F	F ₇	B ^b _Δ	B ^b ₋
F E ^b ₇ D ₇	G ₇ C ₇	F D ₋₇	G ₋₇ C ₇

A

F	F ₇	B ^b _{Δ7}	B ^b ₋
F E ^b ₇ D ₇	G ₇ C ₇	F B ^b	F

B

F ₇	F ₇	B ^b	B ^b
D ₇	D ₇	G ₇	C ₇

A

F	F ₇	B ^b _Δ	B ^b ₋
F E ^b ₇ D ₇	G ₇ C ₇	F B ^b	F C ₇

||

()

..

—

$\frac{A}{4} \left(\frac{C}{4} \right)$

You're Driving Me Crazy (Intro) > Eb
(Medium Swing) Walter Donaldson (1930)

Verse

4/4

D ₇	G-	C ₇	F-	
A ^b	E ^b	F ₇	B ^b ₇	
D ₇	G-	C ₇	F-	
A ^b	E ^b	F ₇	B ^b ₇ B ^b ₊	

A Chorus

E ^b	E ^b E ^b _o	F ₋₇ B ^b ₇	D ^b ₇ C ₇	
F ₇	B ^b ₇	E ^b	F ₋₇ B ^b ₇	
		E ^b B ₇	E ^b D ₇	

B

G	E ₋₇	A ₋₇ D ₇	G	E ₋₇	A ₋₇ D ₇	
G	E ₋₇	A ₋₇ D ₇	G	G ^b _o	F ₋₇ B ^b ₇	

A

E ^b	E ^b E ^b _o	F ₋₇ B ^b ₇	D ^b ₇ C ₇	
F ₇	B ^b ₇	E ^b	E ^b	

Summer Set

(Medium Swing)

Mr. Ackerbilk

A
4/4

F	B ^b	F	B ^b	
---	----------------	---	----------------	--

F	C ₇	F	C ₇	
---	----------------	---	----------------	--

A

F	B ^b	F	B ^b	
---	----------------	---	----------------	--

F	C ₇	F	F	
---	----------------	---	---	--

B

B ^b ₋₇	E ^b ₇	A ^b	A ^b	
------------------------------	-----------------------------	----------------	----------------	--

G	G ₇	C	C ₇	
---	----------------	---	----------------	--

A

F	B ^b	F	B ^b	
---	----------------	---	----------------	--

F	C ₇	F	F	
---	----------------	---	---	--

B Beim 3. Set

B ^b ₋₇	E ^b ₇	A ^b	A ^b	
------------------------------	-----------------------------	----------------	----------------	--

G	G ₇	C ₇	D ₇	
---	----------------	----------------	----------------	--

A

G	C	G	C	
---	---	---	---	--

G	D ₇	G	G	
---	----------------	---	---	--

Up A Lazy River > F

(Medium Swing)

Carmichael, Arodin (1931)

A

4/4

D ₇	D ₇ D ₊	G ₇	G ₇	
C ₇	C ₇	F C ₇	F E ₇ E ₇ ^b	

B

D ₇	D ₇	G ₇	G ₇	
B ^b B _o	F E ₇ E ₇ ^b D ₇	G ₇ C ₇	F E ₇ E ₇ ^b D ₇	
G ₇ C ₇	F E ₇ E ₇ ^b			

Klarinette Jürg > Lady Be Good > F

(Medium Up Swing)

George Gershwin

A

$\frac{4}{4}$ F_{Δ}	B_7^b	F_{Δ} B_7^b	A_{-7} D_7
G_{-7}	C_7	F_6 D_{-7}	G_{-7} C_7

A

F_{Δ}	B_7^b	F_{Δ} B_7^b	A_{-7} D_7
G_{-7}	C_7	F_6	C_{-7} F_7

B

B_{Δ}^b	B_{o7}	F_{Δ}	E_{\emptyset} A_{7b9}
D_{-7}	G_7	G_{-7}	C_7

A

F_{Δ}	B_7^b	F_{Δ} B_7^b	A_{-7} D_7
G_{-7}	C_7	F_6 D_{-7}	G_{-7} C_7

Garner > Teach Me Tonight > Eb

(Slow Swing)

Gene DePaul – Sammy Cahn, 1953

A

4/4 || E^b_{Δ7} A^b₇ | G⁻⁷ C_o_{/E} | F⁻⁷ B^b₇ | G_ø C_{7b9} |

| F₇ | F⁻⁷ B^b₇ | G⁻⁷ C_{7b9} | F⁻⁷ B^b₇ ||

A

|| E^b_{Δ7} A^b₇ | G⁻⁷ C_o_{/E} | F⁻⁷ B^b₇ | G_ø C_{7b9} |

| F₇ | F⁻⁷ B^b₇ | E^b₆ A^b₇ | E^b₆ G⁻⁷ G^b₋₇ ||

B

|| F⁻⁷ B^b₇ | G⁻⁷ C_{7b9} | F⁻⁷ B^b₇ | E^b_{Δ7} |

| A_{ø7} D_{7b9} | G⁻⁷ | C⁻⁷ F₇ | F⁻⁷ B^b₇ ||

A

|| E^b_{Δ7} A^b₇ | G⁻⁷ C_o_{/E} | F⁻⁷ B^b₇ | G_ø C_{7b9} |

| F₇ | F⁻⁷ B^b₇ | E^b₆ C⁻⁷ | F⁻⁷ B^b₇ ||

C'est si bon > Bb

(Medium Swing)

Henri Betti

A

4
4

C ₋₇	F ₇	B _Δ ^b E ₇ ^b	D ₋₇ G ₋₇
C ₋₇	F ₇	B ₆ ^b	D _ø G _{7b9}

A

C ₋₇	F ₇	B _Δ ^b	D ₋₇ G ₋₇
C ₋₇	F ₇	B ₆ ^b	A ₋₇ ^b D ₇ ^b

B

G _Δ ^b E ₋₇ ^b	A ₋₇ ^b D ₇ ^b	G _Δ ^b	G _Δ ^b
G ₋₇	C ₇	C ₋₇	F ₇ D ₋₇ D ₋₇ ^b

C

C ₋₇	F ₇	B _Δ ^b E ₇ ^b	D ₋₇ G ₋₇
C ₋₇	F ₇	D _{ø7} /A _b	G _{7b9}
C ₋₇	E ₋₆ ^b	D ₋₇	G ₇
D ₋₇ ^b G ₇ ^b	C ₋₇ F ₇	B ₆ ^b	C ₋₇ F ₇

On the Sunny Side of the Street > C

(Medium Swing)

Jimmy McHugh – Dorothy Fields, 1930

A

$\frac{4}{4}$ \parallel C₆ | B_ø E₇ | F_Δ D_ø | G₇ G[#]_o |

| A- A₋₇ | D₇ | D₋₇ G₇ | E₋₇ E^b_o D₋₇ G₇ \parallel

\parallel C₆ | B_ø E₇ | F_{Δ7} D_ø | G₇ G[#]_o |

| A- A₋₇ | D₇ | D₋₇ G₇ | C₆ \parallel

B

\parallel G₋₇ | C₇ | F_{Δ7} | F_{Δ7} |

| A₋₇ | D₇ | D₋₇ | G₇ \parallel

A

\parallel C₆ | B_ø E₇ | F_Δ D_ø | G₇ G[#]_o |

| A- A₋₇ | D₇ | D₋₇ G₇ | C₆ G₇ \parallel

()

...

—

$\frac{A}{4} \left(\frac{4}{4} \right) C$

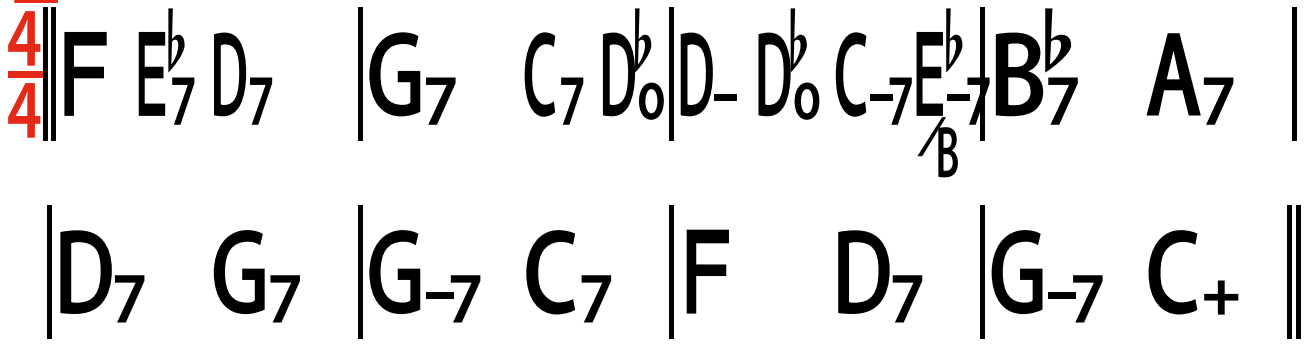
Sweet Lorraine F-Dur

Cliff Burwell – Mitchell Parish, 1928

(Slow Swing)

A

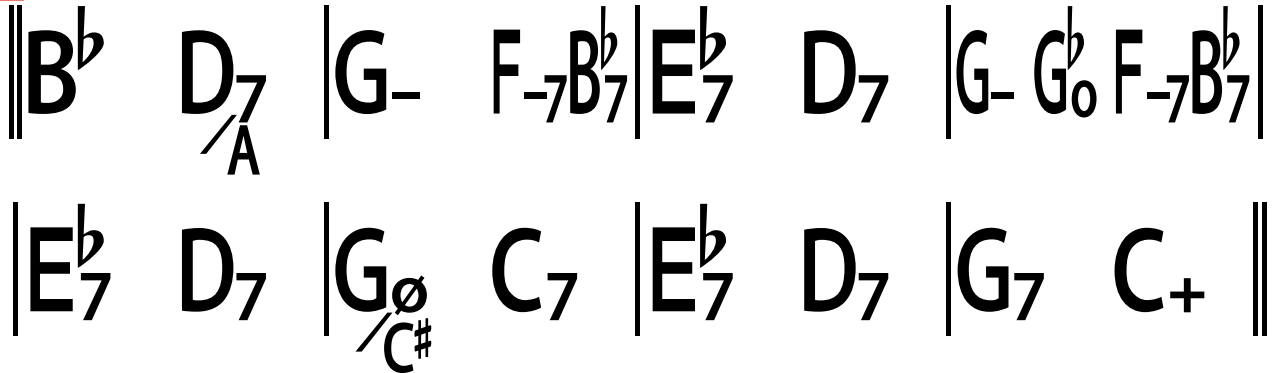
4/4



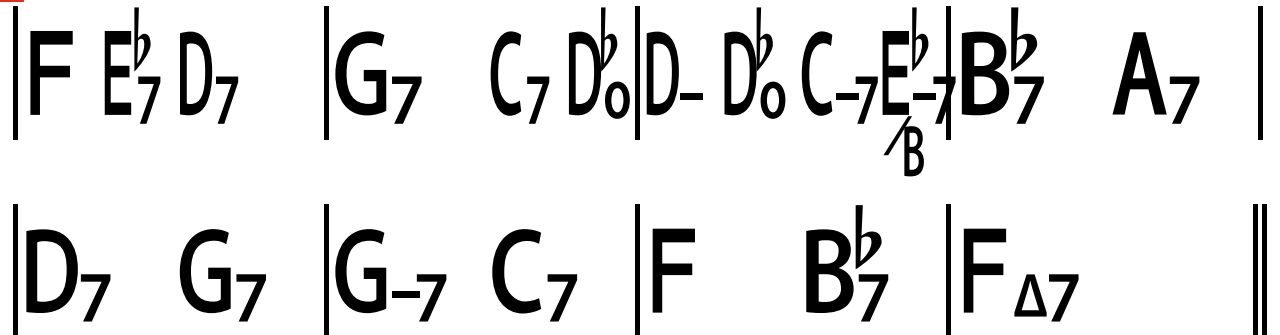
A



B



A



Always > Eb

(Ballad)

Irving Berlin 1925

in

F₋	F_{-7b5}	E^b	F₉
F₋₇	B₇^b	E^b	E^b

S: 2-mal 8 Takte

A

E^b	E^b	E^b	E^b
B₇^b	B₇^b	E^b	E^b
E^b	E^b	E₇^b	G
D₇	D₇	G	B₇^b

B

E^b	E^b	E₇^b	E₇^b D₇ D₇^b
C₇	C₇	F₋	F₋
F₋	F_{-7b5}	E^b	F₉
F₋₇	B₇^b	E^b	E^b

S: 2-mal 8 Takte

(Medium Swing)

Bye Bye Blackbird > F

Raymond Henderson, Mort Dixon, 1926

Intro Piano 8 Takte

A

4/4

F	F	C ₇	F
F	A ^b _o	G ₋₇	C ₇
G ₋	G ₋	G ₋	G ₋
G ₋₇	C ₇	F	F

B

F ₇	F ₇	A _ø	D ₇
G ₋	G ₋	G _ø	C ₇

C

F	F	A _ø	D ₇
G ₋₇	C ₇	F	D ₇ G ₋₇ C ₇

A _ø	D ₇	G ₋₇	C ₇
F			

Lover Come Back To Me > F

(Medium Up Swing)

Sigmund Romberg

A

4:
4

F | F | E_ø | A₇ |

D₋₇ | D₋₇ | G₇ | G₇ |

F | D₋₇ | G₇ | C₇ |

F F₇ | B^b B_o | F_{/C} D₇ | G₋₇ C₇ |

1.

B^b B_o | F | E_{ø7} A₇ ||

B

D₋ | D₋ | G₋ | D₋ | A₇ | A₇ | B₇^b | A₇ |

D₋ | D₋ | G₋ | D₋ | G₇ | G₇ | C₇ | C₇ ||

F | F | E_ø | A₇ |

D₋₇ | D₋₇ | A_ø | D₇ |

G₋₇ | A_o^b | A₋₇ D₋₇ | G₋₇ C₇ |

F F₇ | B^b B_o | F_{/C} D₇ | G₋₇ C₇ ||

S: 3x 2 Takte

Moten Swing > Ab

(Medium Swing)

Bennie Moten (1932)

A

4/4 || **A₆^b** | **A₆^b** | **B₋₇^b** | **E₇^b** |

| **B₇^b** | **B₋₇^b** _{/E^b} | **A₆^b** **F_{7b9}** | **B₇^b** **E₇^b** |

| **A₆^b** | **A₆^b** | **B₋₇^b** | **E₇^b** |

| **B₇^b** | **B₋₇^b** _{/E^b} | **A₆^b** | **D₋₇** **G₇** |

B

| **C₆** **A₋₇** | **D₋₇** **G₇** | **C₆** **A₋₇** | **D₋₇** **G₇** |

| **C₆** **A₋₇** | **D₋₇** **G₇** | **C₆** | **B₋₇^b** **E₇^b** |

A

| **A₆^b** | **A₆^b** | **B₋₇^b** | **E₇^b** |

| **B₇^b** | **B₋₇^b** _{/E^b} | **A₆^b** **F_{7b9}** | **B_{7b9}^b** **E_{7b9}^b** ||

Secret Love, My > Eb

(Medium Swing)

Sammy Fain – Paul Francis Webster, 1953

A

4/4

E^b_Δ F₋₇ | G₋₇ F₋₇ | E^b_Δ F₋₇ | G₋₇ F₋₇ |

E^b_Δ A^b₇ | G₋₇ C₇ | F₋₇ | B^b₇ |

F₋₇ | B^b₇ | F₋₇ | B^b₇ |

F₋₇ | B^b₇ | E^b₆ C₇ | F₋₇ B^b₇ ||

A

E^b_Δ F₋₇ | G₋₇ F₋₇ | E^b_Δ F₋₇ | G₋₇ F₋₇ |

E^b_Δ A^b₇ | G₋₇ C₇ | F₋₇ | B^b₇ |

F₋₇ | B^b₇ | F₋₇ | B^b₇ |

F₋₇ | B^b₇ | E^b₆ | D_ø G₇ ||

B

C₋₇ | F₇ | B^b_{Δ7} | B^b_Δ |

B^b₋₇ | E^b₇ | A^b_Δ | A^b₋₇ ||

C

E^b_Δ F₋₇ | G₋₇ F₋₇ | G_ø | C_{7#9} |

F₋₇ | B^b₇ | E^b₆ | E^b₆ ||

Sweet Georgia Brown > Ab

(Up Tempo Swing)

Pinkard-Casey-Bernie

A p/Trio beginnt

4/4

F₇	F₇	F₇	F₇			
B^b₇	B^b₇	B^b₇	B^b₇			
E^b₇	E^b₇	E^b₇	E^b₇			
A^b	E^b₇	A^b	C₇			
F₇	F₇	F₇	F₇			
B^b₇	B^b₇	B^b₇	B^b₇			
F₋	C₇	F₋	C₇			
A^b	A^b	F₇	B^b₇	E^b₇	A^b	

S: 2-mal 8 Takte

Swinging the Blues > F

(Medium Swing)

Count Basie

$\frac{4}{4}$	F	F	F	
B^b₇	B^b₇	F	F	
C₇	C₇	F	F	

Things Ain't What They Used To Be > Bb

(Medium Swing)

Duke Ellington

4/4

Bb7

Bb7

Bb7

Bb7

Eb7

Eb

Bb7

Bb7

C-7

F7

Bb7 G7

C-7 F7

Klarinette Jürg > Limehouse Blues > Ab

(Up Tempo Swing) Braham-Furber



F	F	F	F
F	F	F	F
A-	A-	E ₇	A-
A-	E ₇	C ₇	C ₇
F ₇	F ₇	B ^b	B ^b
A ₇	A ₇	D-	D-
F	F	F	F
F	B _F ⁻⁶	F B ₋₇	E ₇ ^b A ₇ ^b



D ₇ ^b	D ₇ ^b	D ₇ ^b	D ₇ ^b	B ₇ ^b	B ₇ ^b	B ₇ ^b	B ₇ ^b
A ₆ ^b	A ₆ ^b	C ₇	F ₋₇	B ₇ ^b	B ₇ ^b	B ₋₇ ^b	E ₇ ^b D ₇



D ₇ ^b	D ₇ ^b	D ₇ ^b	D ₇ ^b	B ₇ ^b	B ₇ ^b	B ₇ ^b	B ₇ ^b
A ₆ ^b	F ₇	B ₋₇ ^b	B ₋₇ ^b	B ₋₇ ^b	E ₇ ^b	A ₆ ^b	A ₆ ^b

()

.....

—

$\frac{A}{4} \frac{4}{4} \frac{4}{4} C$

$\left. \begin{array}{c} \vdots \\ \vdots \\ \vdots \end{array} \right\}$